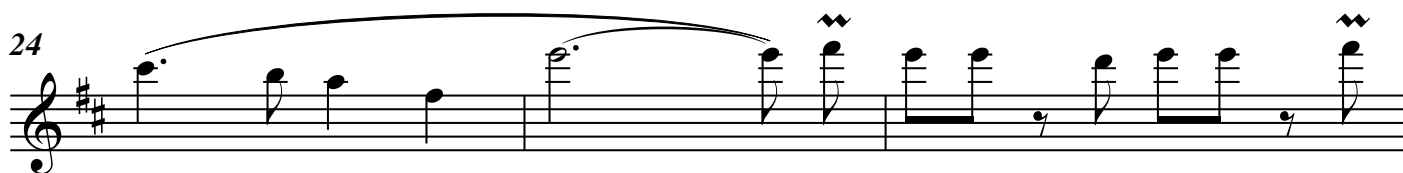
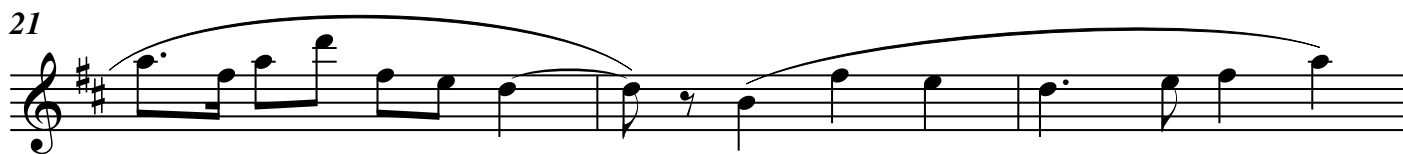
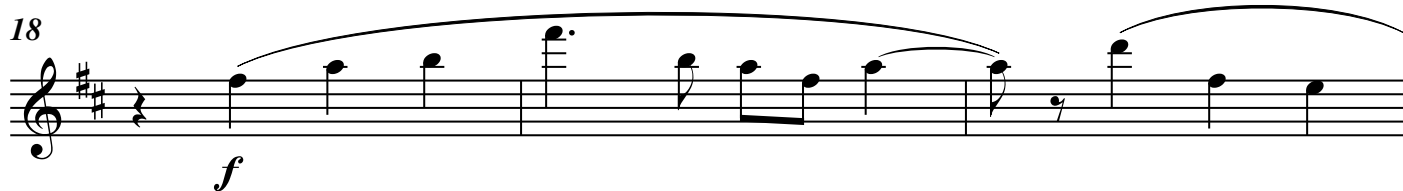
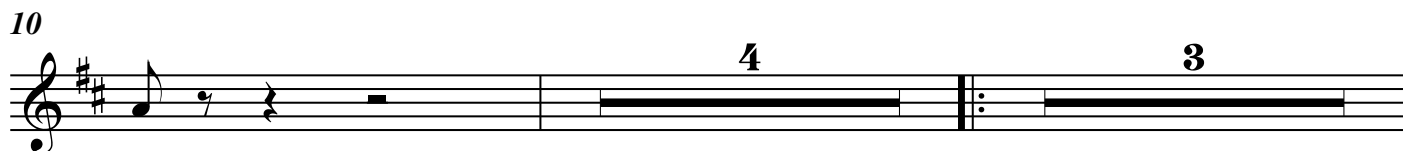
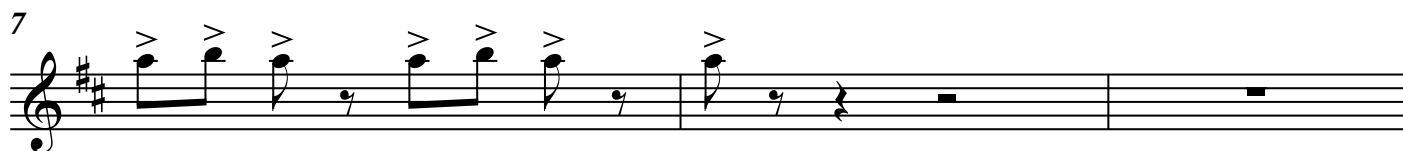


高音嗩吶

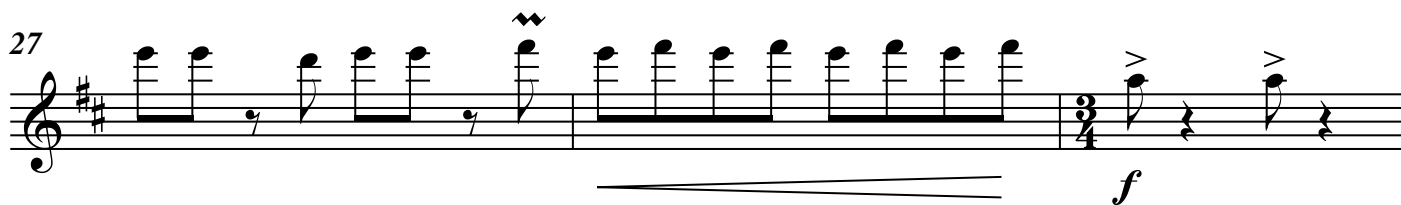
《慶典序曲》

(中級)

熱情地快板 ♩ = ca.120



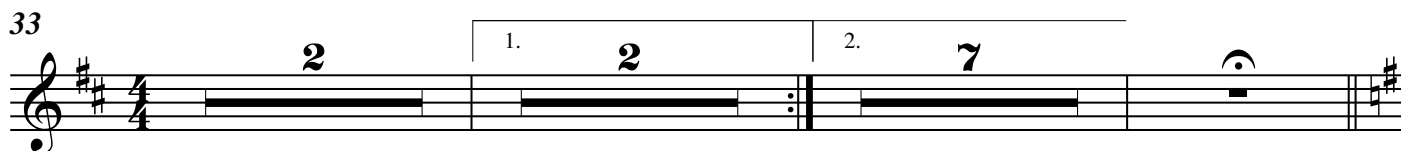
27



30

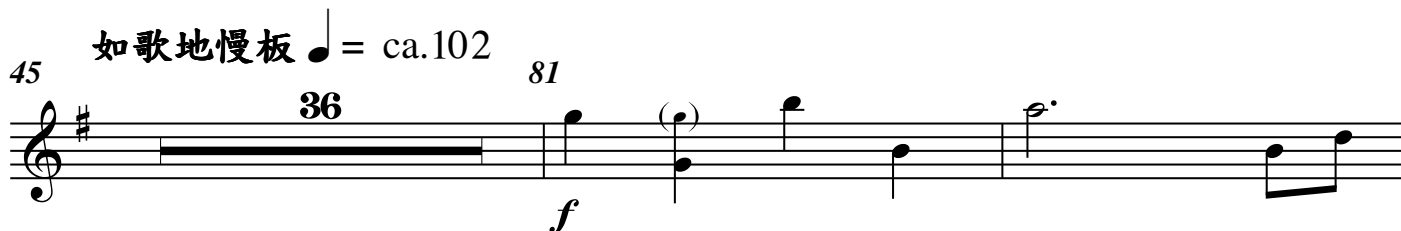


33

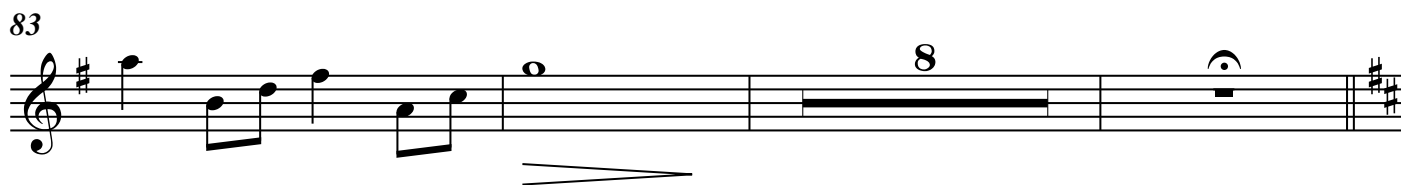


45

如歌地慢板 $\text{♩} = \text{ca.}102$



83



94

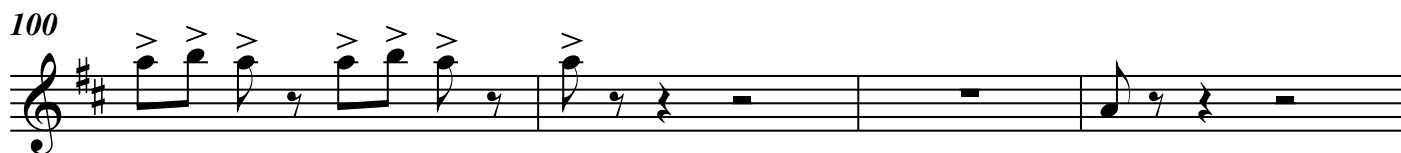
熱情地快板 $\text{♩} = \text{ca.}120$



97



100



104

4 3 111

f

113

116

119

122

f

125

2 1. 2 2. 7

137

♩ = ca.112

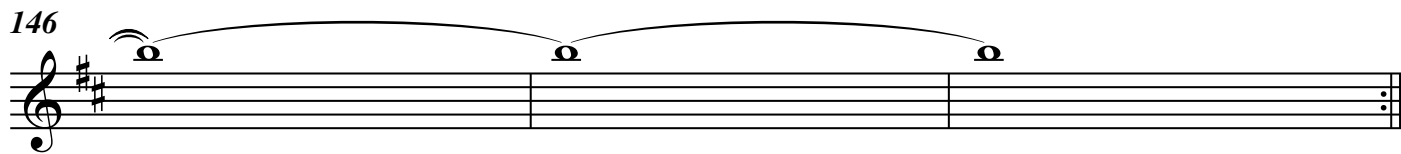
f

140

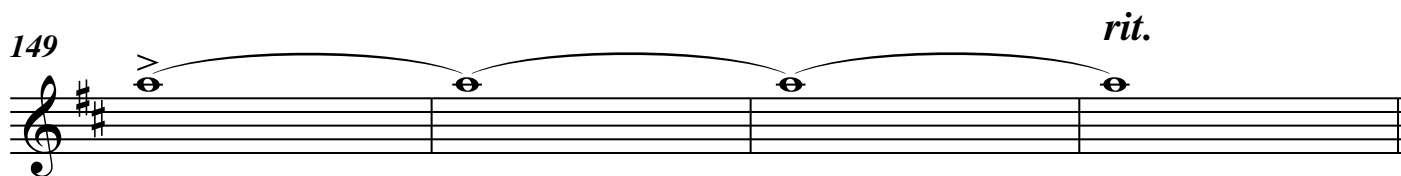
143



146



149

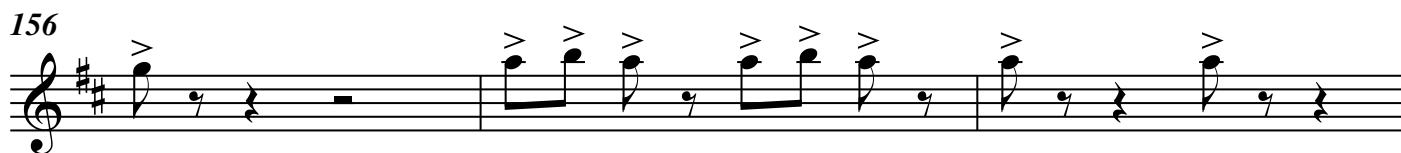


153

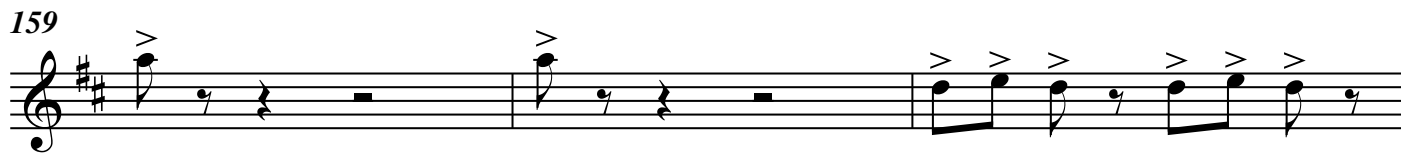
尾聲 ♩ = ca.120




156



159



162



166

