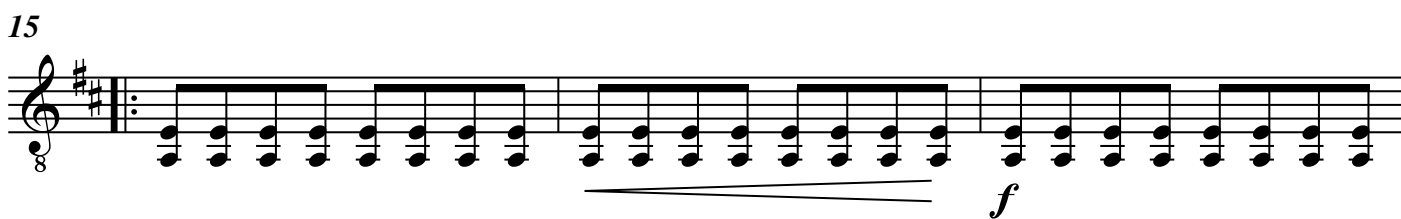
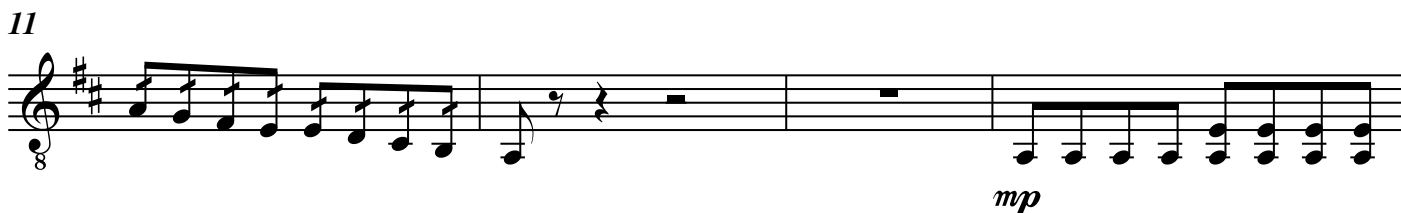
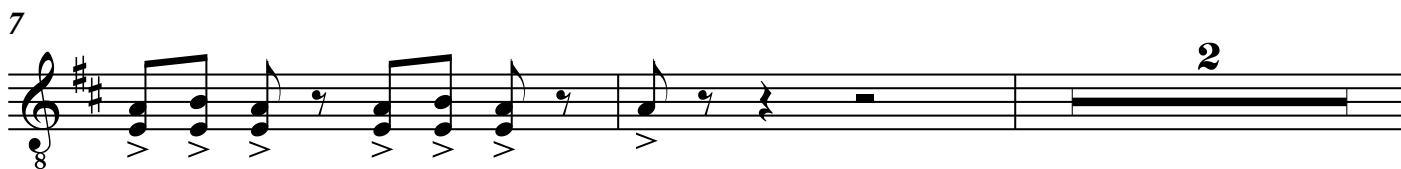


中阮

《慶典序曲》

(中級)

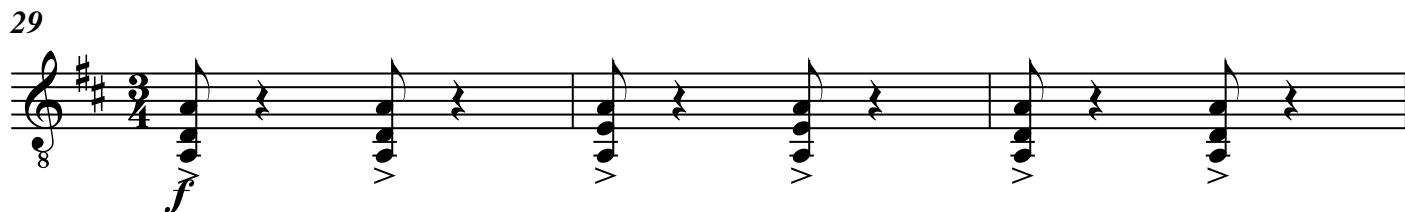
熱情地快板 ♩ = ca.120



24



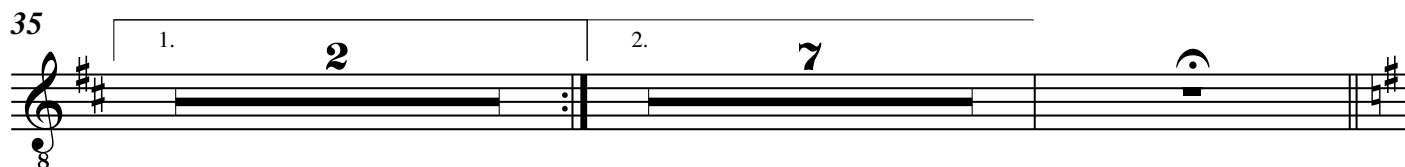
29



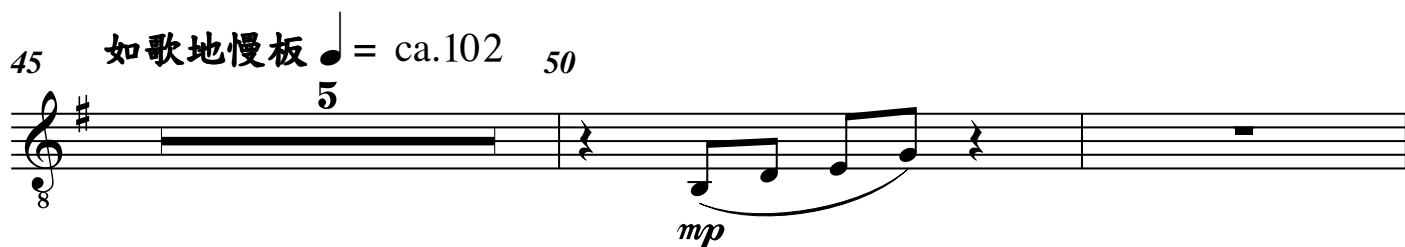
32



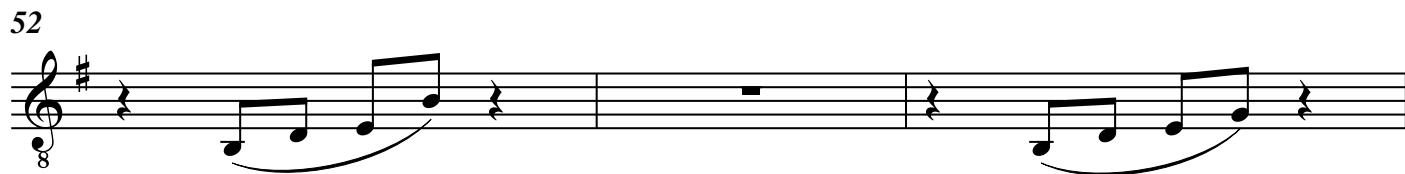
35



45 如歌地慢板 $\text{♩} = \text{ca.}102$ 50



52



55



V.S.

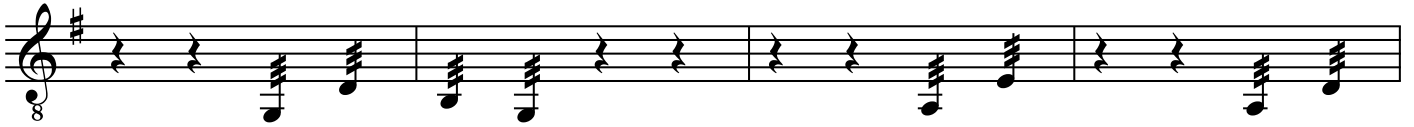
61



65



69



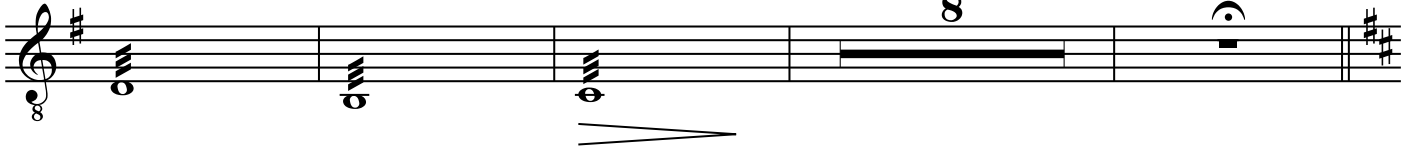
73



77



82



熱情地快板 ♩ = ca.120

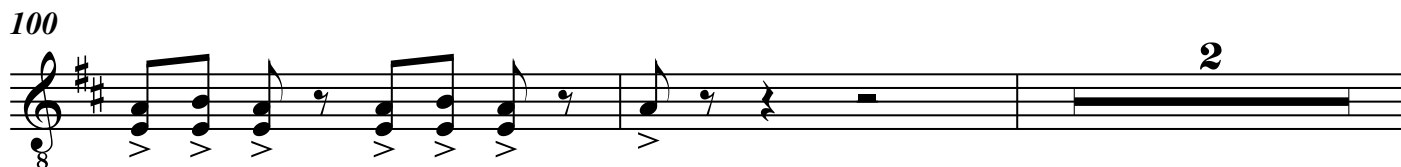
94



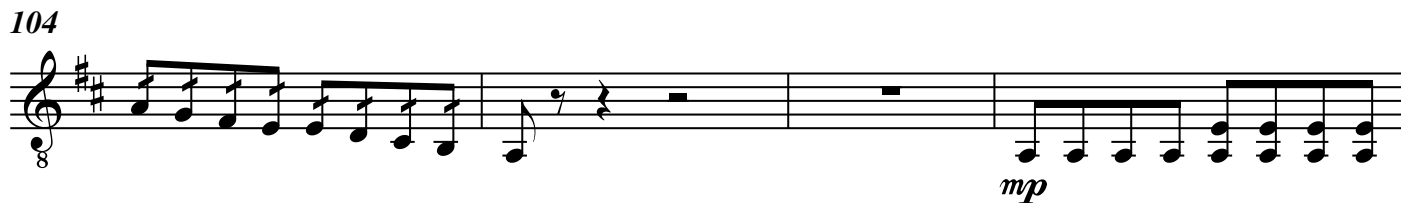
97



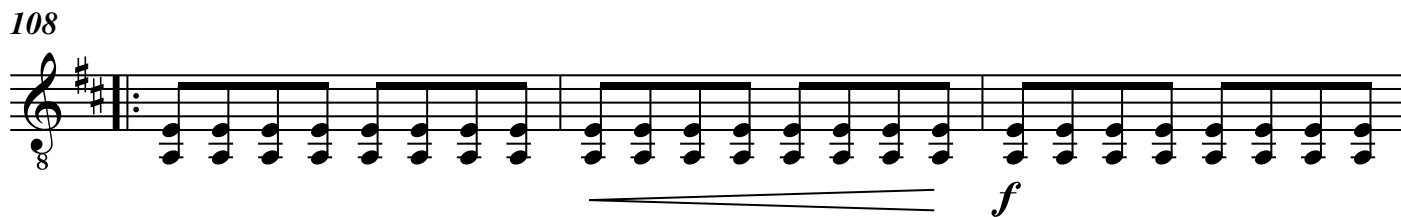
100



104



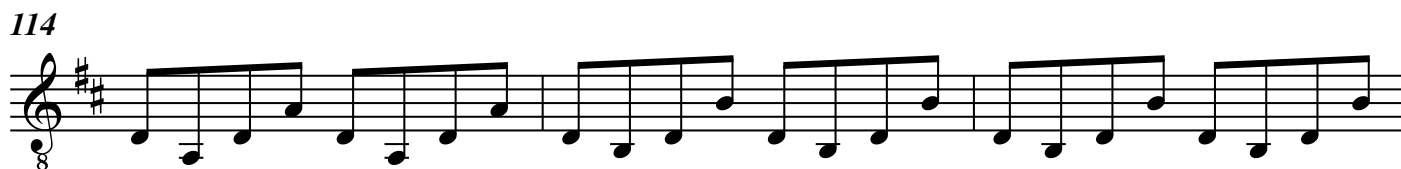
108



111



114



117



122



126



130

2.

2

mp

134

mf

rit.

137

f

$\bullet = \text{ca.}112$

143

149

rit.

153

尾聲 $\bullet = \text{ca.}120$

f

156

159

162



Musical notation for measure 162, featuring a treble clef, a key signature of two sharps (F# and C#), and a 2/4 time signature. The notation consists of a series of eighth notes grouped in pairs, with a dynamic marking of *p* (piano) at the beginning and *f* (forte) at the end. A horizontal line with a double underline spans the duration of the measure.

165



Musical notation for measure 165, featuring a treble clef, a key signature of two sharps (F# and C#), and a 2/4 time signature. The notation consists of a series of eighth notes grouped in pairs, continuing the rhythmic pattern from the previous measure.

168



Musical notation for measure 168, featuring a treble clef, a key signature of two sharps (F# and C#), and a 2/4 time signature. The notation consists of two eighth notes followed by a quarter rest, with a dynamic marking of *sf* (sforzando) at the beginning. The measure ends with a double bar line.