

[中音笙 / 次中音笙]

# 賽馬會中樂360 十面埋伏 (中級)

劉文金、趙咏山 編曲  
譚逸昇 改編

## 【列營】 威武地

(大鼓)

Musical notation for the first staff, measures 1-4. It features a treble clef, a key signature of one sharp (F#), and a 2/4 time signature. The music starts with a series of eighth notes, followed by a half note with a fermata. Dynamics include 'ff' and 'v'.

5

Musical notation for the second staff, measures 5-8. It features a treble clef, a key signature of one sharp (F#), and a 2/4 time signature. The music consists of quarter notes and a half note with a fermata. Dynamics include 'mp' and '2'.

10

rit. 3 3 慢

Musical notation for the third staff, measures 9-13. It features a treble clef, a key signature of one sharp (F#), and a 2/4 time signature. The music includes triplet eighth notes and quarter notes. Dynamics include 'f' and 'v'.

14 由慢漸快 行板

Musical notation for the fourth staff, measures 14-17. It features a treble clef, a key signature of one sharp (F#), and a 2/4 time signature. The music consists of quarter notes with rests. Dynamics include 'mp'.

18

Musical notation for the fifth staff, measures 18-21. It features a treble clef, a key signature of one sharp (F#), and a 2/4 time signature. The music consists of quarter notes with rests. Dynamics include 'mp'.

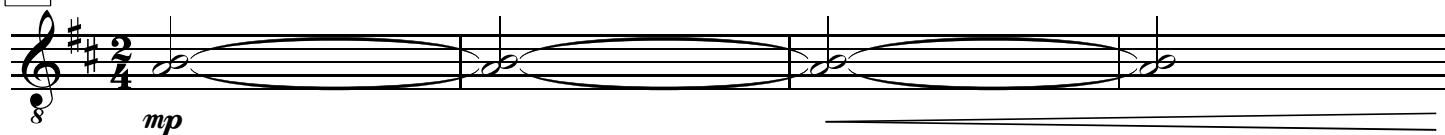
22 稍穩

Musical notation for the sixth staff, measures 22-25. It features a treble clef, a key signature of one sharp (F#), and a 2/4 time signature. The music consists of quarter notes with rests. Dynamics include 'p' and 'f'.

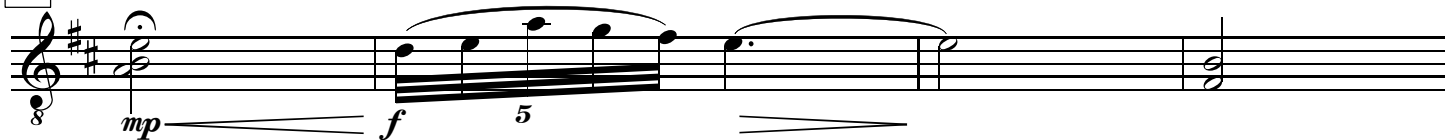
26 由慢漸快 行板

Musical notation for the seventh staff, measures 26-29. It features a treble clef, a key signature of one sharp (F#), and a 2/4 time signature. The music includes quarter notes and a half note with a fermata. Dynamics include '2'.

32



36

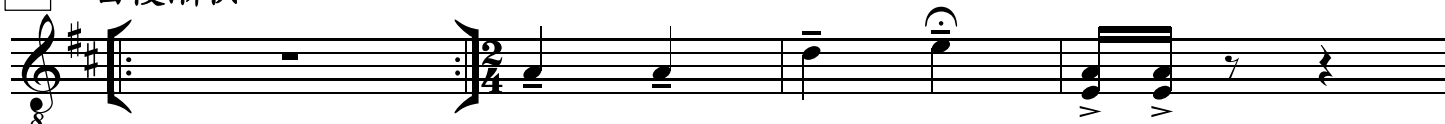


40



44

由慢漸快



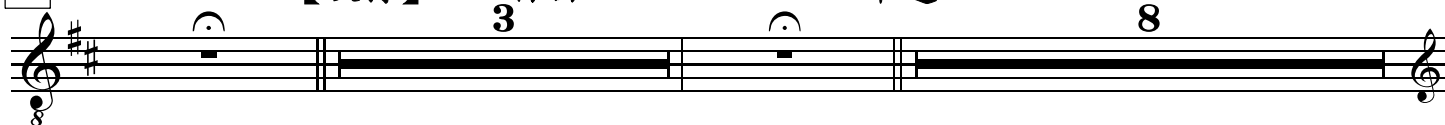
48

【吹打】

自由

中速

8

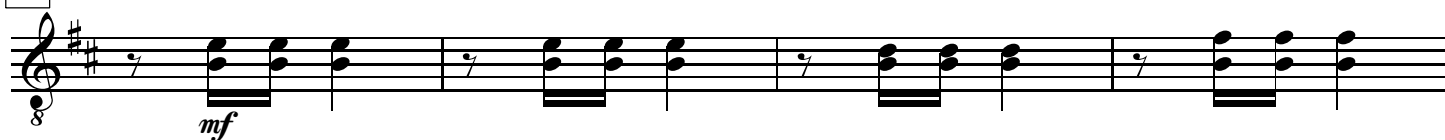


61

(二胡)



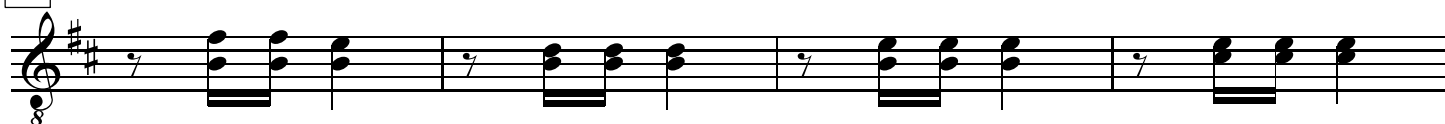
65



69



73



77 rit.

81 【埋伏】 由慢漸快 4 14 稍漸慢 2

103 (二胡)

108

113

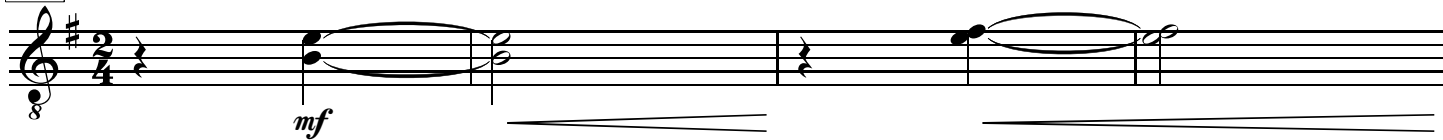
118

123 稍慢 突轉快板

【小戰】、【大戰】

127 (二胡)

138



142



146

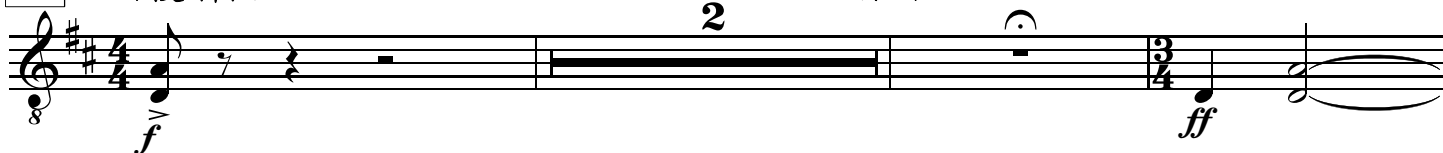
rit.



150

由慢漸快

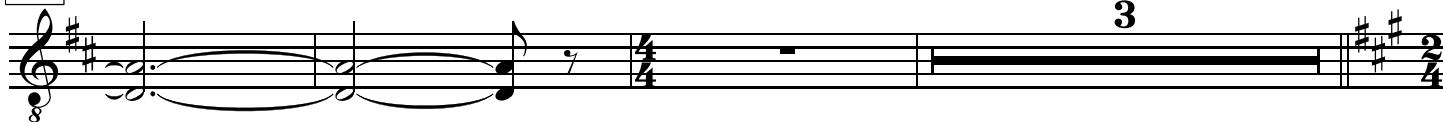
自由



155

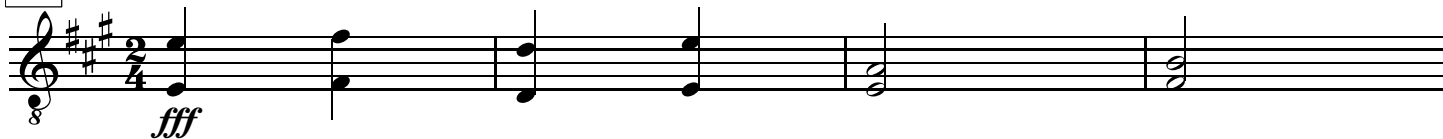
rit.

快板



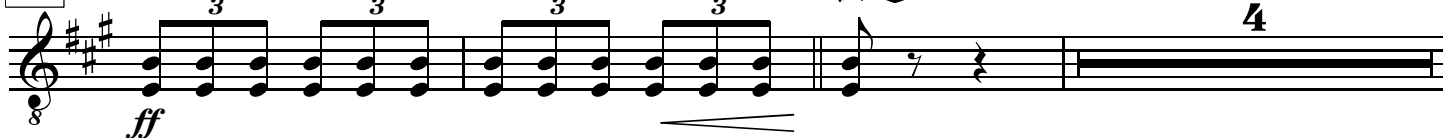
161

rit.



165

快速



172

rit.



177 更慢些

183 【烏江】  
中速稍慢

191 accel.

195

198

202 【奏凱】  
中速

206 ♩ = 48

211 稍快 ♩ = 132

217 (高胡)

222

226

234 *molto rit.* 慢

239

244

249