

中胡

# 賽馬會中樂360 十面埋伏 (中級)

劉文金、趙咏山 編曲  
譚逸昇 改編

## 【列營】威武地

(大鼓)

Musical notation for measure 1, featuring a treble clef, a key signature of one sharp (F#), and a 2/4 time signature. The notation includes a series of eighth notes, a fermata over a quarter note, and dynamic markings *mp* and *ff*.

Musical notation for measures 4 and 5. Measure 4 contains a quarter rest followed by a quarter note with a fermata. Measure 5 features a triplet of eighth notes and a quarter note, with dynamic markings *mp* and *f*.

Musical notation for measures 10 and 11. Measure 10 includes a triplet of eighth notes and a quarter note, with a *rit.* marking. Measure 11 features a quarter note and a quarter rest, with a *慢* (ritardando) marking.

Musical notation for measures 14 and 15. Measure 14 contains a half note with a fermata and a *2* marking. Measure 15 features a half note with a fermata and a *2* marking, with a *(琵琶)* marking.

Musical notation for measures 22 and 23. Measure 22 includes a quarter note with a fermata and a quarter note, with dynamic markings *mp* and *f*. Measure 23 features a quarter note and a quarter rest, with a *稍穩* (ritardando) marking.

Musical notation for measures 28 and 29. Measure 28 contains a quarter note and a quarter rest, with a *p* marking. Measure 29 features a quarter note and a quarter rest, with a *mf* marking.

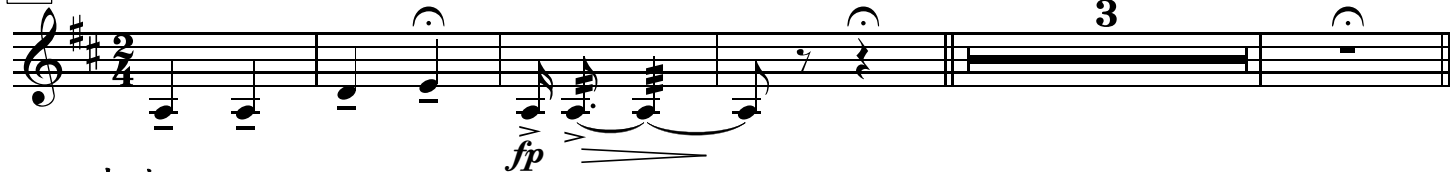
Musical notation for measures 34 and 35. Measure 34 includes a quarter note and a quarter rest, with a *mp* marking. Measure 35 features a quarter note with a fermata and a quarter note, with a *f* marking and a *5* marking.

Musical notation for measures 39 and 40. Measure 39 contains a quarter note and a quarter rest. Measure 40 features a quarter note and a quarter rest, with a *mf* marking.

44 由慢漸快



45 【吹打】 自由

53 中速  
(二胡)

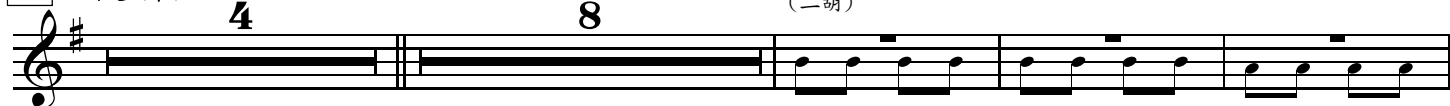
57 3



77 rit. 【埋伏】

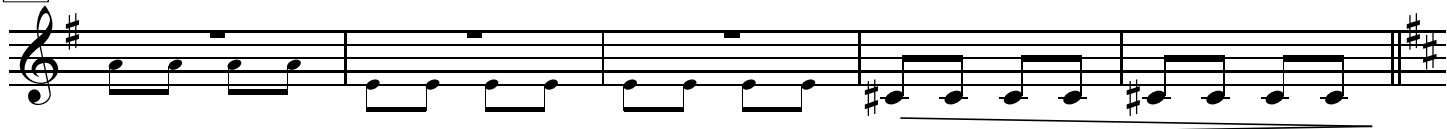


83 由慢漸快



98

稍漸慢



103



108



113



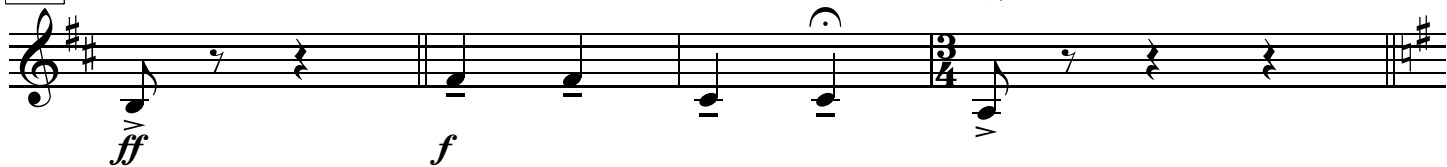
118



123

稍慢

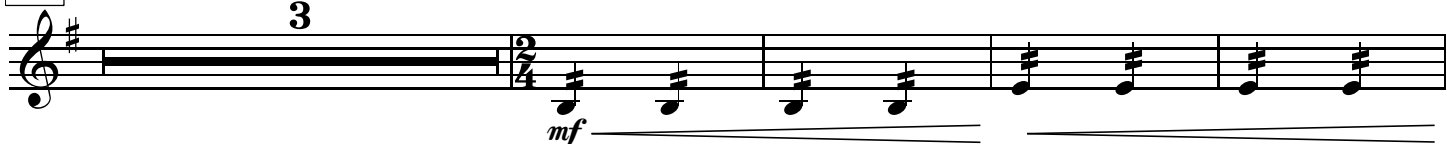
【小戰】、【大戰】  
突轉快板



127



135



142 rit.

148 由慢漸快

153 自由

157 rit. 快板

161 rit.

165 快速

169

173 rit.

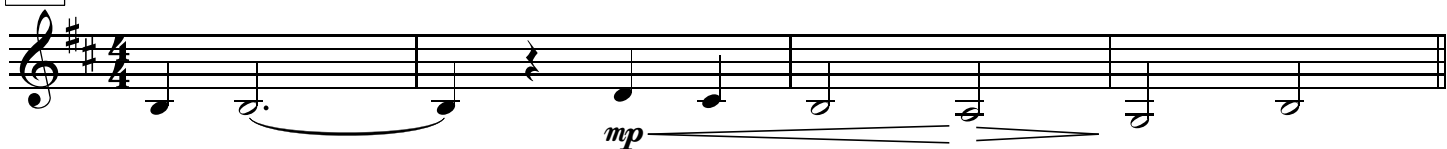
177 更慢些

【烏江】  
中速稍慢

183



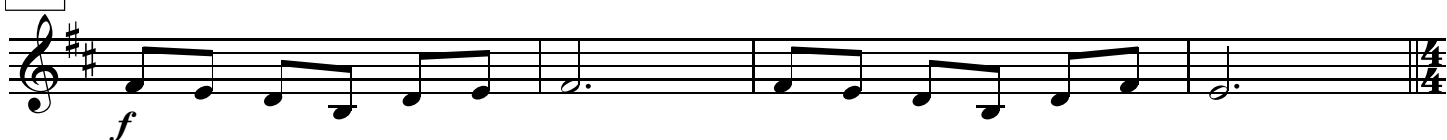
186



190



194



198



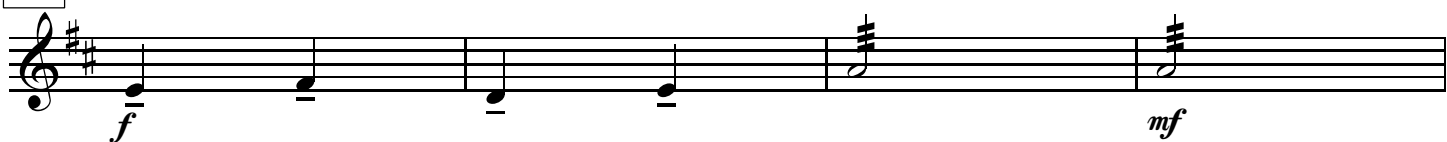
【奏凱】

202 中速



206

♩ = 48



210

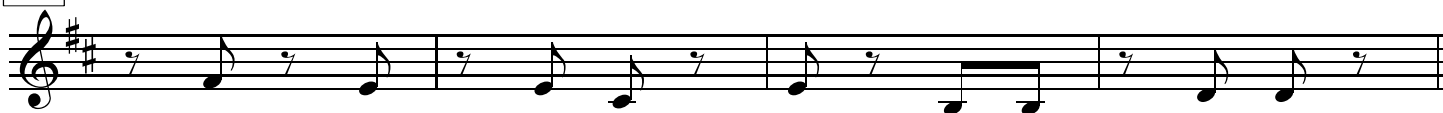
稍快 ♩ = 132



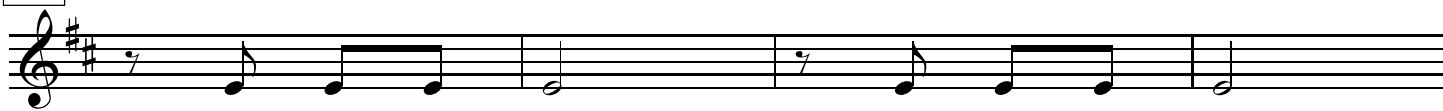
214



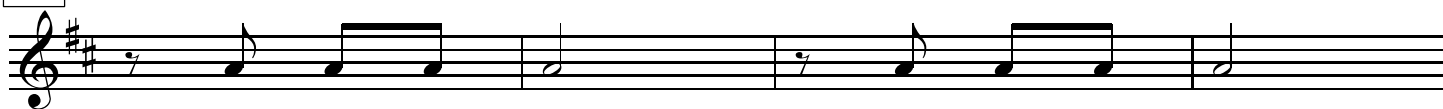
218



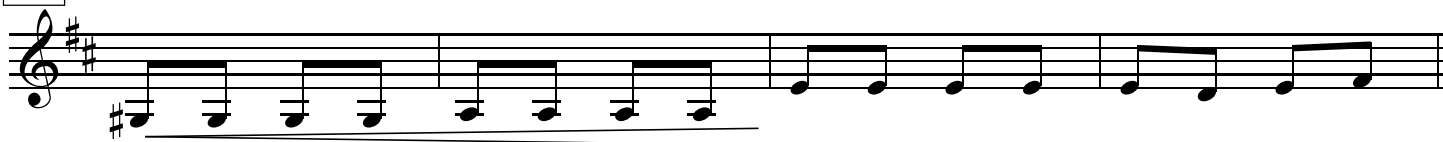
222



226



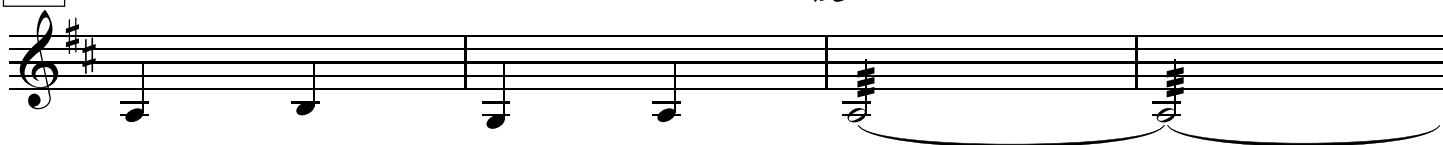
230



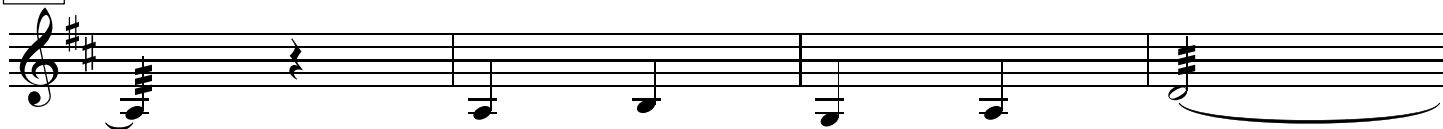
234

*molto rit.*

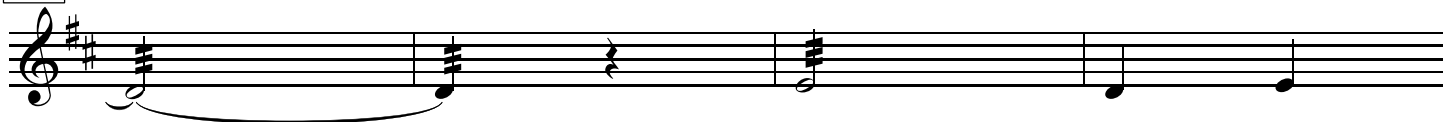
慢



238



242



246



250

