

夢 ♩ = 62 ca. 稍自由

fff \rightarrow pp

6

12

18

3

25 ♩ = 56 ca.

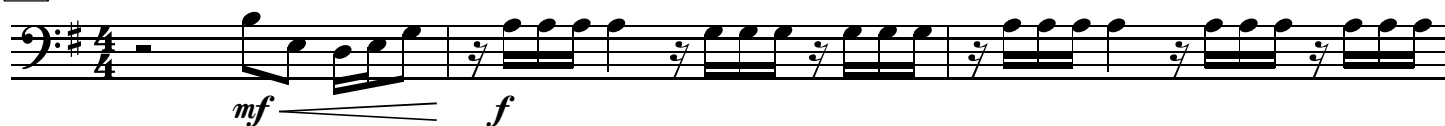
32

39

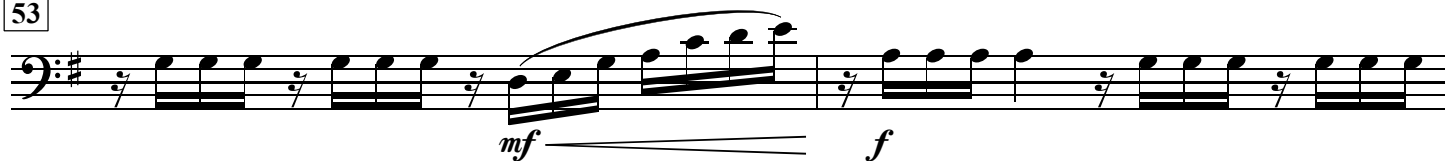
46

(二胡)

50



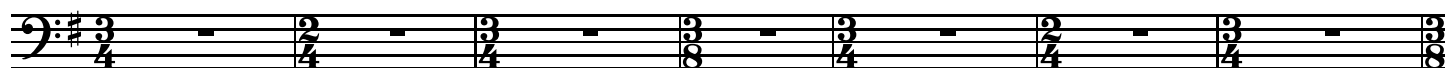
53



55



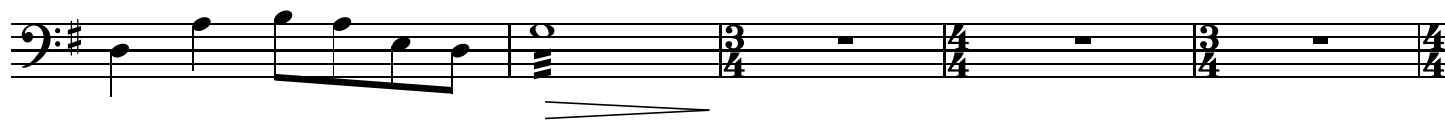
58



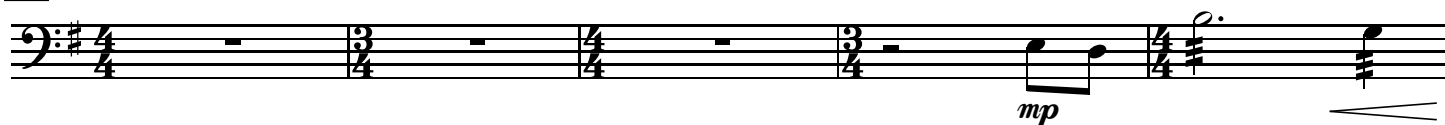
65



70



75



80



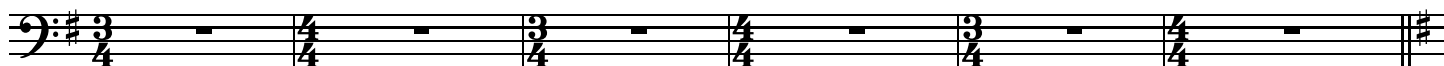
82



84



87

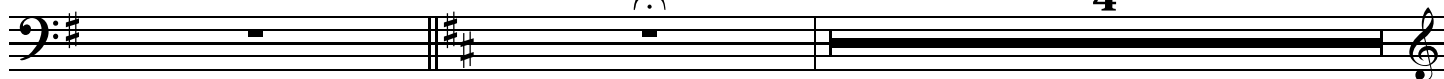


93

盛

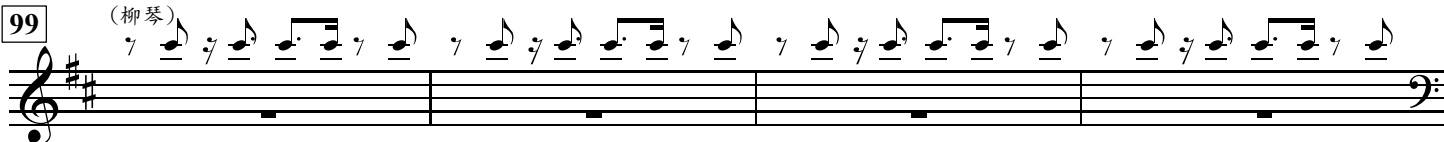
♩ = 78 ca.

4

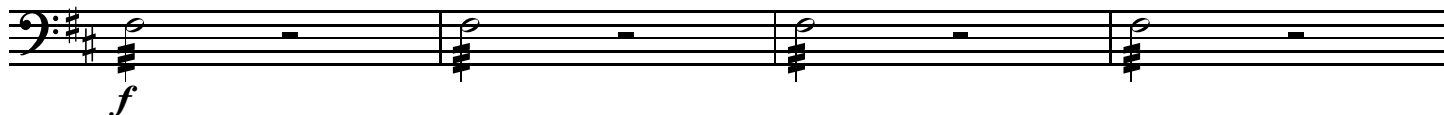


99

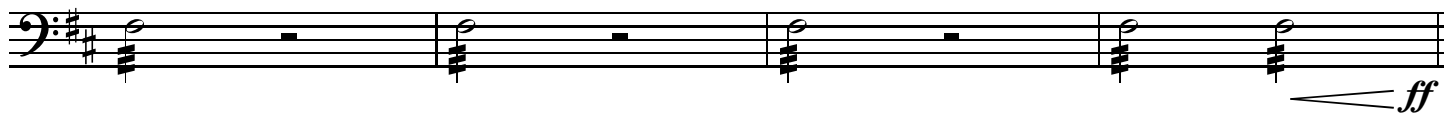
(柳琴)



103



107



♩ = 156 ca.

111



114



117



121

(揚琴)

8

mf \curvearrowright *ff*



132

29

f *p*



164 (梆笛)

168

172

182 (揚琴)

188

192

196

200

204

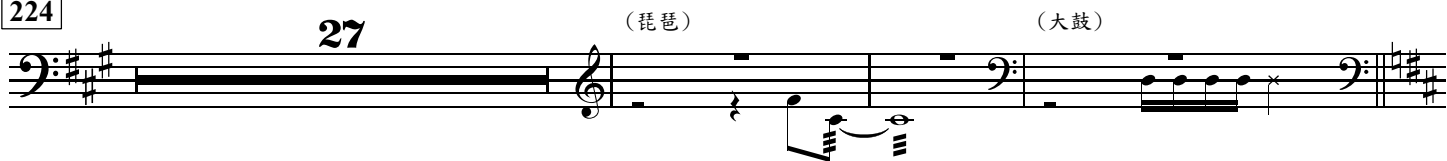
208

214

220



224



254



258



262



266



270



274



278



282



286

舞

♩ = 62 ca.
46

(笛)

Musical notation for measure 286, featuring a bass clef, treble clef, and various notes and rests.

336

Musical notation for measure 336, featuring a bass clef and a series of eighth notes.

f

340

Musical notation for measure 340, featuring a bass clef and a series of eighth notes.

344

Musical notation for measure 344, featuring a bass clef and a series of eighth notes.

347

Musical notation for measure 347, featuring a bass clef and a series of eighth notes.

稍加快

350

Musical notation for measure 350, featuring a bass clef and a series of eighth notes.

ff

♩ = 56 ca.

稍加快

353

同

3

(二胡)

Musical notation for measure 353, featuring a bass clef, treble clef, and various notes and rests.

361

♩ = 66 ca.

Musical notation for measure 361, featuring a bass clef and a series of eighth notes.

f

363

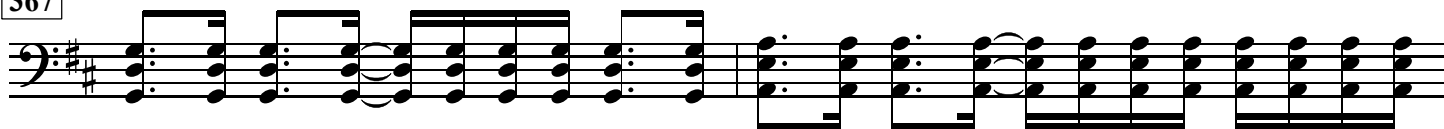
Musical notation for measure 363, featuring a bass clef and a series of eighth notes.

365

♩ = 69 ca.

Musical notation for measure 365, featuring a bass clef and a series of eighth notes.

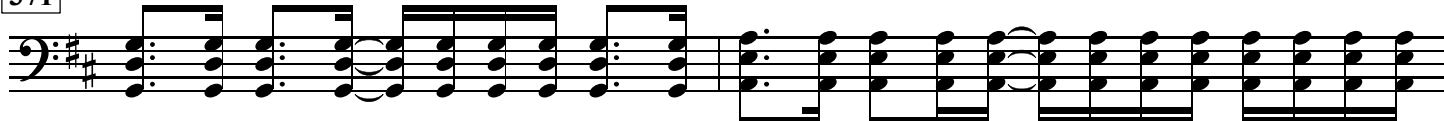
367



369



371



373



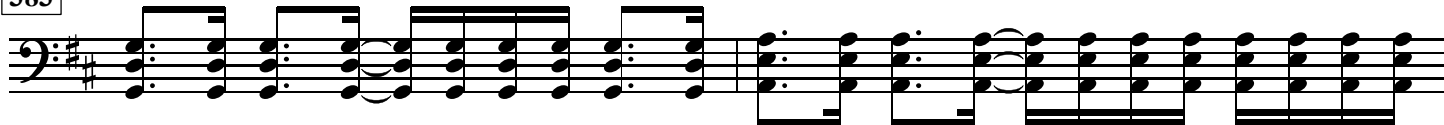
377



381



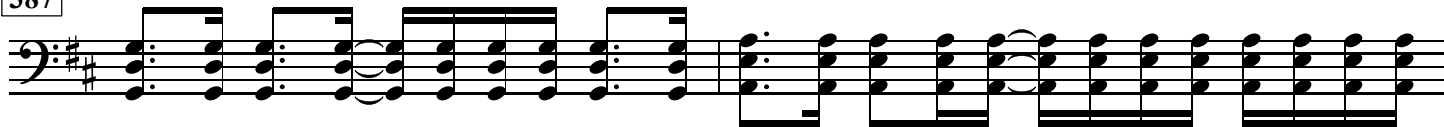
383



385



387



稍慢

389

